



2MCCTV TotalView - Video Security System for Education Centers

2M Solutions provides video security surveillance applications to campus facilities that allow school administrators to instantly monitor their facility. Fast, secure, and on-demand security video solutions are the core business of 2M CCTV and our systems are designed to allow administrators to have a total view of their campus from their office desktop or at a remote location.

Facility Management

Using 2M CCTV advanced Video Security System, an administrator can maintain constant and easy access to the complete facility. Administrators can instantly monitor school entrance and exits, classroom hallways, parking lots, athletic facilities and computer labs.

- Monitor single or multiple Cameras
- Monitor any camera from office desktop, internet, or PDA
- Motion detection, around the clock, and pre-schedule recording mode
- Control Pan/Tilt/Zoom Cameras
- Record any camera on motion detection on pre-determined schedule
- Built-in web server
- Send predefined Alarms to designated E-mail address



Campus Safety Measures

For your school's safety, the overall goal is simply to provide the safest possible education environment at your facility. That goal involves addressing specific issues including reducing vandalism and theft, controlling access to buildings during the day, keep unwanted intruders out at night, and detecting and responding to fire threats immediately.

Your Facility ... At Your Fingertips

GeoVision's GV-Series is a PC based multi-channel video surveillance system that utilizes the most advance digital video compression technologies to bring you the highest picture quality and video performance. The GV-Series product range starts from our entry level GV-250 to the flagship GV-1000. Up to 16 cameras can be connected and viewed live on a local monitor screen or thru TCP/IP network. You can store video clips in HDD on any storage device. The 2M CCTV video security is complete with a DELL Computer that is a P4 system with a 17" Color Flatscreen Monitor.



Monitor on PC or PDA!

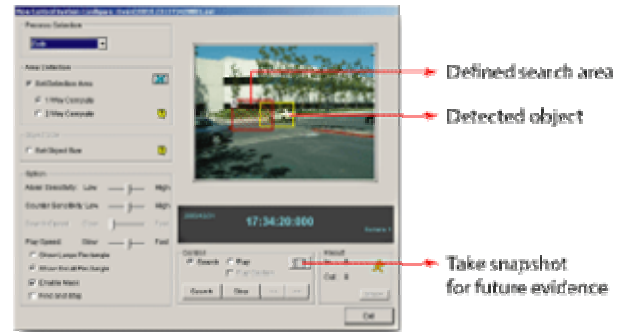




Technical Overview

The PCI based Digital Video Recorder (DVR) Card records live video data to your hard drive or network drive for archival purposes. These cards can install in your present Intel-based PC. The software includes the ability to view from a single stand alone pc, a network, and also through the Internet.

You can store the DVR video files on a CD or Email specific video files to the designated emails. Share the remote access application amongst those that need access to selected cameras. Access the video while on the road from your laptop or PDA! Provide a live video on your school's website.



The system includes:

- Dell Pentium PC with 17" Flat Screen Monitor
- GeoVision DVR PCI Board
- 4-16 Samsung High Resolution 480 TVL Cameras (other cameras can be substituted)

Features Include:

- Motion detection and pre-schedule recording mode
- Alarm to E-mail (Jpeg or text message)
- Embedded PTZ control panel
- Build-in web server
- Multi level passwords protection
- Support dynamic IP address
- Independent video brightness and contrast control
- Selectable motion detection sensitivity and masking area for each camera
- Independent recording quality and frame rate adjustment



Packaged Systems start at \$1,995 for 4 Camera Video System with Dell PC, GeoVision DVR, and Hi-Res Samsung Cameras

