



VEILUX®

MOBILE DVR

VDR-MINI3-4CH

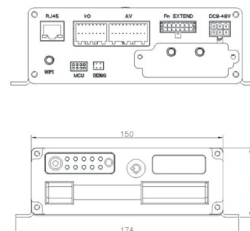
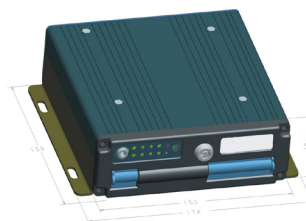


VDR-MINI3-4CH is a newer high-end H.264 product in SVT that provides the perfect surveillance solution of Vehicles. The strong PC software ---- CMS include remotely live view, record files download, local recording, GPS tracking and local record files playback, User authority level, strong log system and vehicle management, it's very convenient to manage vehicles. Super low profile design is good for installation. SD card storage can make sure a good video quality and work in harsh environment.

FEATURES

- H.264 Technology for Video Compression
- Support Powerful CMS (Central Monitoring System) for Superior Live View / GPS Tracking, Alarm Information
- Built-in Removable 3G / EDGE / CDMA, WIFI Module for Wireless Transmission
- Stand Alone NON-PC Embedded Operating System (RTOS) Provides Maximum Stability
- Built-in GPS Allows for Vehicle Tracking, Latitude and Longitude Value Recording in Video Fielded
- Dual Streaming Transmission for Each Channel
- Support USB2.0 Thumb Drive Backup Record Files
- Optional with Built-in Heater
- Watermark and Time / Date Stamp in Exported Images
- Special File System (NVRFSTM) for Record Files Protection

DIMENSIONS



3015 Eagle Drive, Suite 100, Grand Prairie, Texas 75052
 Local Number: (214) 635-4855 / Fax: (928) 437-6270
sales@veilux.net
www.veilux.net



VEILUX®
The Art of Surveillance



VEILUX®

SPECIFICATION

VDR-MINI3-4CH

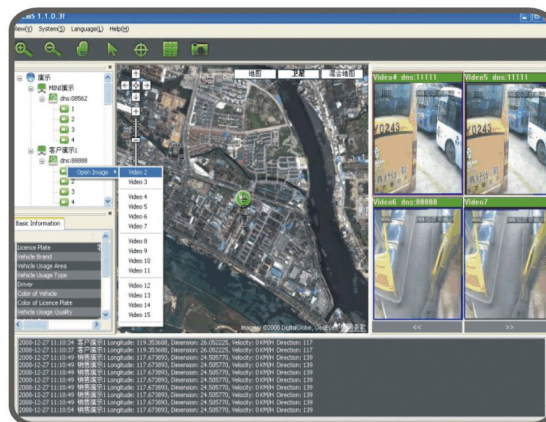
System	OS	Linux 2.6 (providing standalone stable operation system)
	Operation Interface	Hand-held, IR controller with On-Screen Display (OSD) for all operations of the MDVR
	Storage	SD Card, Max 32GB
	Video System	NTSC / PAL
Video	Camera Input	4 cameras
	Display	1 image / 4 images ISO1449
	Stream Standard	Selectable recording resolutions (CIF, HD1, D1)
	Record Resolution	PAL: CIF (352 x 288), HD1 (704 x 288), D1 (704 x 576)
	Video Compression	NTSC: CIF (360 x 240), HD1 (720 x 240), D1 (704 x 576) H.264
	Max FPS	Full D1 25FPS / 30 FPS per channel at 1 cameras D1 / HD1 at 12FPS / 15FPS per channel at 4 cameras Full CIF 25FPS / 30FPS per channel at 4 cameras
Audio	Audio Input	4 channel (Impedance 600Ω)
	Audio Output	1 channel
	Audio Compression	ADPCM
	LAN	1 (RJ-45) 10M / 100M Ethernet connector
I/O Interface	USB	Support USB 2.0, for backup and update
	Serial	External GPS
	External	For RS-485 extend, such as PTZ, inertia sensor and so on
Network	Protocol	TCP / IP
Alarm	Input	Totally 10 sensors (support 8 sensors input, 2 sensors output)
	Multi-Mode	Triggered by video loss, over speed, over temperature, no SD card, sensors and so on
Power Requirement	Ignition Switch	Device will start recording when ignition power on / auto shutdown delay after ignition power off
	Power Consumption	Average 10W
	Input Voltage	8 V ~ 36 VDC
	Output Voltage	12V / 3A

Physical Characteristics	Dimension (W x H x D)	150 x 54 x 170mm (5.2" x 2.1" x 6.8")
	Weight	1.5kg (2.2lb)
Others	Record Mode	Manual, Continuous, Schedule, Event and Pre-Event Recording
	Time Clock	Built-in clock, perpetual calendar
	GPS Function	Optional for built-in module with GPS antenna
	Wireless Communication	3G / EDGE / CDMA, WIFI wireless transmission (optional)
Environment	Time Synch	GPS Time Synch / NTP (Network Time Protocol) Time Synch via network connection
	Operating Temperature	-25°C ~ +55°C (If temperature is below -25°C, please use built-in heater)
	Relatively Operating Humidity	20% - 95%
	Vibration Resistance	<2 Grms
	Shock Resistance	<1200 Grms

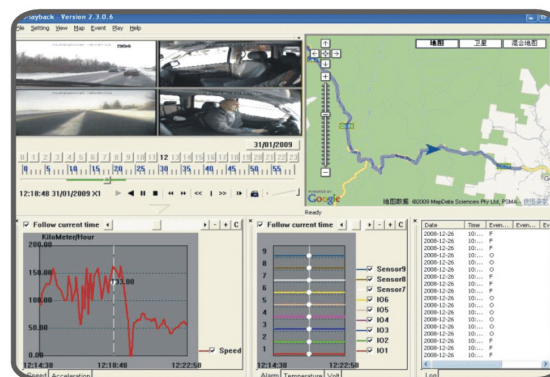
SOFTWARE SUPPORT

- Media Management Software (MMS)
- Center Management Software (CMS)
- Remote Management Software (RMS)
- Playback Analysis Software

Center Management Software



Playback Analysis Software



VEILUX®

The Art of Surveillance

3015 Eagle Drive, Suite 100, Grand Prairie, Texas 75052
 Local Number: (214) 635-4855 / Fax: (928) 437-6270
 sales@veilux.net
 www.veilux.net