



VEILUX®

MOBILE DVR

VDR-X3-4CH

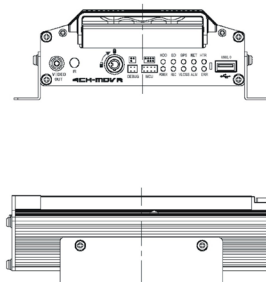
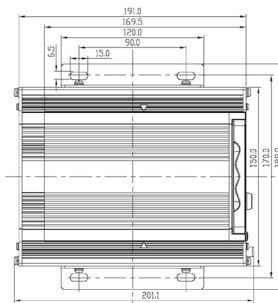


MDVR-X3PRO is a newer high-end H.264 product in SVT that provides the perfect surveillance solution of Vehicles. The strong PC software ---- CMS include remotely live view, record files download, local recording, GPS tracking and local record files playback, User authority level, strong log system and vehicle group management. Built-in vibration absorber / shock absorber are inside of removable hard disk housing. Small profile is very convenient for installation.

FEATURES

- Support 1 Channel Real-Time D1, 4CH D1 at 12 fps / 15fps
- H.264 Wireless Transfer, Dual Streaming Transfer For Each Channel to Provides the Excellent Recording Performance.
- Build-in 3G / EDGE / CDMA, WIFI for Wireless Transmission (Optional)
- Support Powerful CMS (Central Monitoring System) For Superior Live View, GPS Tracking, and Alarm Information.
- Built-in GPS Allows for Vehicle Tracking, Latitude and Longitude Value Recording in Video Fielded.
- Stand Alone NON-PC Embedded Operating System (RTOS) Provides Maximum Stability.
- Watermark and Time / Date Stamp in Exported Images.
- Lockable, Plastic HDD Handle, Protect HDD Efficiently
- Special File System (NVRFSTM) for Record Files Protection.
- Mirror Recording in SD Card.

DIMENSIONS



3015 Eagle Drive, Suite 100, Grand Prairie, Texas 75052
Local Number: (214) 635-4855 / Fax: (928) 437-6270
sales@veilux.net
www.veilux.net



VEILUX®

The Art of Surveillance



VEILUX®

SPECIFICATION

VDR-X3-4CH

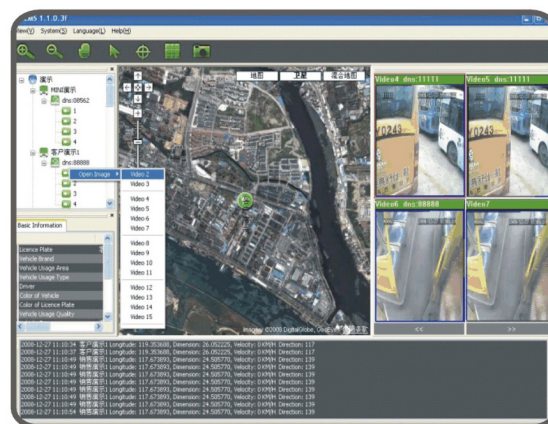
System	OS	Linux 2.6 (providing standalone stable operation system)
	Operation Interface	Hand-held, IR controller with On-Screen Display (OSD) for all operations of the MDVR
	Storage	SATA HDD up to 500GB
	Video System	NTSC / PAL
Video	Camera Input	4 cameras
	Display	1 image / 4 images ISO14496-10
	Stream Standard	Selectable recording resolutions (CIF, HD1, D1)
	Record Resolution	PAL: CIF (352 x 288), HD1 (704 x 288), D1 (704 x 576)
	Video Compression	NTSC: CIF (360 x 240), HD1 (720 x 240), D1 (704 x 576) H.264
	Max FPS	Full D1 25FPS / 30 FPS per channel at 1 cameras D1 / HD1 at 12FPS / 15FPS per channel at 4 cameras Full CIF 25FPS / 30FPS per channel at 4 cameras
Audio	Audio Input	4 channel (Impedance 600Ω)
	Audio Output	1 channel
	Audio Compression	ADPCM + G.726 (8 kbps)
I/O Interface	LAN	1 (RJ-45) 10M / 100M Ethernet connector
	USB	Support USB HOST 2.0, for backup and firmware update
	Serial	RS-232 for external GPS
	External	For RS-485 extend, such as PTZ, inertia sensor and so on
Network	Protocol	TCP / IP
Alarm	Input	Totally 10 sensors (support 8 sensors input, 2 sensors output)
	Multi-Mode	Triggered by video loss, over speed, over temperature, HDD no space, sensors and so on
Power Requirement	Ignition Switch	Device will start recording when ignition power on / auto shutdown delay after ignition power off
	Power Consumption	Average 10W (with HDD)
	Input Voltage	8 V ~ 36 VDC
	Output Voltage	12V / 3A, 5V / 1A

Physical Characteristics	Clearance Dimension (W x H x D)	201 x 66 x 189mm	Device Dimension (W x H x D)	201 x 56 x 150mm
	Weight	3.0 kg (5.51lb)		
Others	HDD	Removable HDD Bay -- 1 SATA HDD or SSD HDD (optional)		
	Storage Mode	2.5" HDD		
	Time Clock	Built-in clock, perpetual calendar		
	GPS Function	Optional for built-in GPS module with GPS antenna		
	Wireless Communication	3G / EDGE / GPRS / CDMA and WIFI wireless transmission (both are optional)		
	Data R/W Mode	FIFO		
Environment	Time Synch	GPS Time Synch / NTP (Network Time Protocol) Time Synch via network connection		
	Operating Temperature	0 ~ 55°C (If temperature is below 0°C, please use built-in heater)		
	Relatively Operating Humidity	20% - 95%		
	Vibration Resistance	<2 Grms		
	Shock Resistance	<1200 Grms		

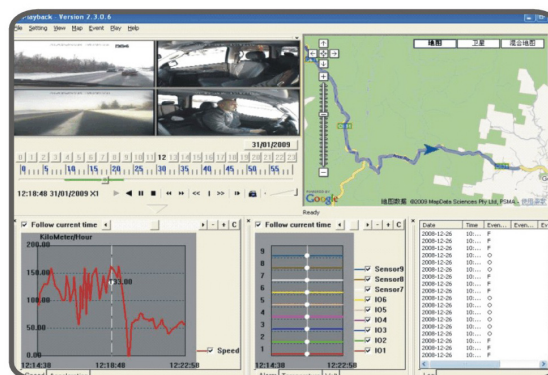
SOFTWARE SUPPORT

- Media Management Software (MMS)
- Center Management Software (CMS)
- Auto-Download System (ADS)
- Playback Analysis Software

Center Management Software



Playback Analysis Software



VEILUX®

The Art of Surveillance

3015 Eagle Drive, Suite 100, Grand Prairie, Texas 75052
 Local Number: (214) 635-4855 / Fax: (928) 437-6270
 sales@veilux.net
 www.veilux.net